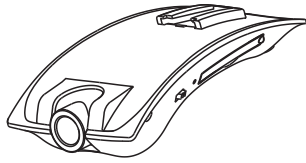
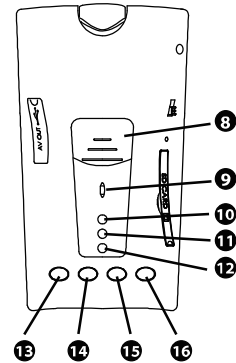
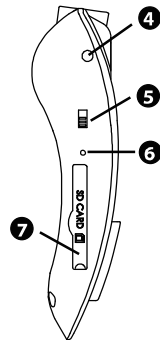
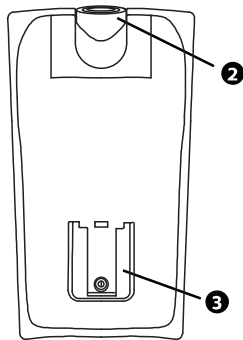
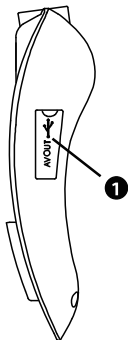


HD Mobile-i Instruction Manual



Please read this manual before using the Mobil-i, and keep for future reference, thank you.

Product overview

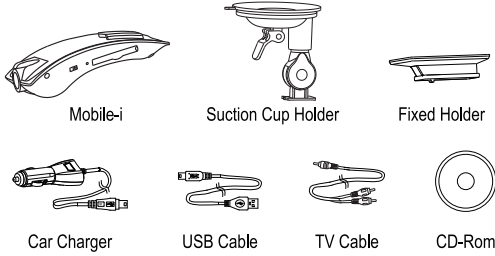


- ➊ USB & AV-out
- ➋ Camera
- ➌ Holder Slot
- ➍ Camera Lock
- ➎ Mic. On-Off
- ➏ Reset Key
- ➐ SD card slot
- ➑ Power & Video On-Off

- ➒ Buzzer
- ➓ LED- Blue
- ➑ LED- Green
- ➒ LED- Red
- ➓ Down
- ➑ Up
- ➒ Enter
- ➓ Mode

Contents

Mobile-i.....	1PC
Suction Cup Holder.....	1PC
Fixed Holder.....	1PC
Car Charger.....	1PC
USB Cable.....	1PC
TV Cable.....	1PC
CD-Rom.....	1PC

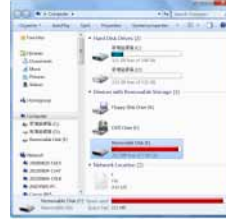


6

Please setup the Date & Time into Mobile-I before install to your vehicle:

Date & Time setting (PC)

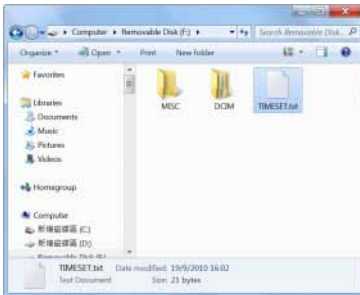
1. Press and hold the key 'Power & Video On-Off' for a second, then the green light is on.
2. Connect HD Mobile-I to PC by USB cable, then both of the blue and green light are on.
3. A removable dish will show up in my computer immediately as below and it can be used as a u-disk to save information.



4. Set the computer time in accordance with local time.

7

5. Insert CD driver into CD-Rom. Copy the file 'SETTIME.bat' to any path of your computer, then double click the file and the 'TIMESET.txt' shows up. Please copy it to the removable disk as below.



6. When you restart HD Mobile-I, you'll find the time is same as your computer, and the document named 'TIMESET.txt' was deleted automatically.
7. To ensure the time is correct, we recommend user updates the time every 6 months.

8

Date & Time setting (TV)

1. Connect HD Mobile-I to TV or AV monitor by TV cable (The yellow cable should be connected with the video output port and the white cable connected with the audio output port). Also need to set the TV to AV mode;
2. Press and hold 'Power & Video On-Off' key for a second, real time image will display on TV or AV monitor;
3. Press 'Mode' key, monitor will show up the Menu Interface, Use 'Up / Down' key to enter Data Input option;



9

4. Press 'Enter' key to adjust the date and time, and press 'Enter' again to save the data and quit as below;

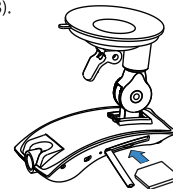


5. Date and time setting complete.

10

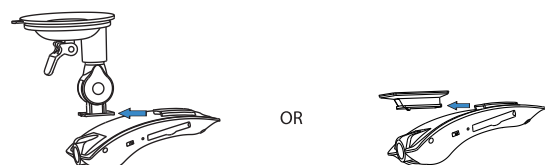
Mobile-i installation

1. Open the SD card cover and insert a SD card into the slot. (support SD card up to 32GB).

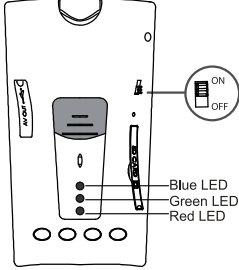


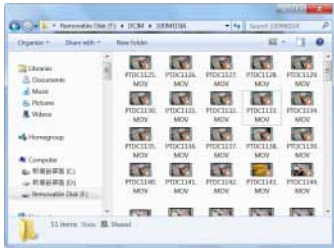
P.S.: The SD card must be inserted in the indicated direction. Otherwise may cause damage or recording error.

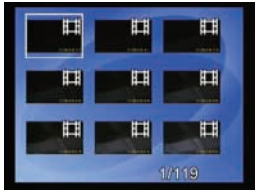
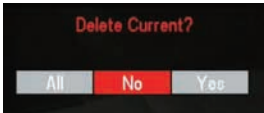
2. You can select Suction Cup Holder or Fixed Holder according to your own chooses. Then fix the Camera on the Holder as below.



11

<p>a. Suction Cup Holder Please clean up the windshield (inside), Put the holder in front of rear mirror then press the lever down to ensure the holder was fixed well.</p> <p>b.Fixed Holder Please clean up the windshield, Peel backing paper off and then stick it onto windshield by adhesive. Push firmly to secure holder.</p> <p>3. Connect car charger to Mobile-i USB slot for power supply.</p> <p>4. Lens adjust You have two way to adjust the lens angle:</p> <p>Connect Mobile-i to your own video device:</p> <p>a. Using applied TV cable to Connect Mobile-i to your own video device.</p> <p>b. Start the engine then Mobile-i will start recording immediately, real time image will display on the screen.</p> <p>c. Use Philips screw driver to loosen the Camera Lock, adjust the lens angle according to screen then lock it.</p>	<h2 style="background-color: #cccccc; padding: 2px;">Recording</h2> <ol style="list-style-type: none"> 1. Start engine to power on Mobile-i, Green LED on and beep sound alert. 2. Red LED flash when Mobile-i start recording automatically. 3. Set the 'Mic on/off switch' to 'off' if no need sound recording. 4. Mobile-i need 1~2 sec. for data loading, If you stop the engine before the recording start, recording function may not start or stop automatically. Please check the LED light status and press Power & Video on-off switch to resume/stop recording manually. 5. Stop engine, Mobile-i keep on recording for 10 seconds and then shutdown. 
12	13

<ol style="list-style-type: none"> 6. Stop engine, Mobile-i keep on recording for 10 seconds and then shutdown. 7. Every movie clip is three minutes and the interval between the movie clips is 1 second. 8. After SD card memory is full, Mobile-i will erase the first 15mins data to free up the memory for continue recording. 9. You will get a Beep sound alert if the car charger loosened by vibration during driving. Mobile-i will stop recording after 10 sec. 10. "Mode, Enter, Up & Down" button for TV mode or PC connection only. <p>PS. Certain car models may keep the Mobile-i power on even you stop the engine. If the red LED keep on flashing, it means car charger is still working. To save the car battery and avoid previous video are overwritten, please pull out the car charger.</p>	<h2 style="background-color: #cccccc; padding: 2px;">PC Mode Operations</h2> <h3 style="background-color: #cccccc; padding: 2px;">USB Mode</h3> <ol style="list-style-type: none"> 1. Press and hold the key 'Power & Video On-Off' for a second, then the green light is on. 2. Connect HD Mobile-i to PC by USB cable, then both the blue and green light are on. 3. A removable disk will show up in my computer immediately. (All the video were saved under the path\DCIM\100MEDIA)  <ol style="list-style-type: none"> 4. Double click the video to play. Remark: Media player must support MOV format.
14	15

<h2 style="background-color: #cccccc; padding: 2px;">TV Mode Operation</h2> <h3 style="background-color: #cccccc; padding: 2px;">TV Mode</h3> <ol style="list-style-type: none"> 1. Turn on the TV and set it to TV or AV mode. 2. Press and hold 'Power & Video On-Off' key to turn on HD Mobile-i. 3. Connect HD Mobile-i to TV or AV monitor by TV cable. (The yellow cable should be connected with video output port while the white cable connected with the audio output port). 4. Now the real time image will show on the screen. 5. Press and hold 'Power & Video On-Off' key to start record. Every movie clip is three minutes. Press and hold 'Power & Video On-Off' key again to stop recording. 	<ol style="list-style-type: none"> 6. Double click 'Mode' key, the videos thumbnail will show up as below.  <ol style="list-style-type: none"> a) Press any one of the four keys 'Up / Down / Mode / Enter' to select video; b) Press 'Power & Video On-Off' key to select video. Then press 'Enter' key to enter deleting option and press 'Power & Video On-Off' key to turn back to the video;  <ol style="list-style-type: none"> c) Press 'Down' key to play video and press once again to pause; d) Press and hold the 'Mode' key to turn back to real time camera mode.
16	17

7. The 'Mode' key can switch to three menus as below.



Use 'Up / Down' key to select the option and press 'Enter' key to enter into the detailed settings with different functions as below:

- Select 'Language' to choose language.
- Select 'Format' to format the SD Card, then all the data will be deleted.
- Select 'TV Mode' to set TV to NTSC or PAL system.
- Select 'Frequency' to set the light frequency to 50HZ or 60HZ.
- Select 'Date / Time' to set date, time and the format for date / time.
- Select 'Auto Power off' to set the auto power off time E.g.1min, 3mins.
- Select 'Beep Sound' to turn on or turn off the buzzer.
- Select 'Default Setting' to recover the default system.
- Select 'Version' to check the version of your HD Mobile-i.

Remark: If no need to set any details, please press 'Mode' key to turn back to the homepage manu.

Low Power Indication

HD Mobile-i Built-in Li-ion battery can work for a half hour. If the power is running low, the blue LED will flash for 5 seconds and then shut down. If it is recording, all the data will be saved and then shut down.

LED Status

Red, Green and Blue LED to indicate all the working status.

Working Status	Red	Green	Blue
Power off	OFF	OFF	OFF
Power on	OFF	ON	OFF
Recording	FLASH	ON	OFF
SD card detect fault	ON	ON	OFF
SD card bad contact	OFF	FLASH	OFF
Li-ion battery low	OFF	OFF	FLASH
USB mode	OFF	ON	ON
USB mode (no SD card)	ON	ON	ON

Specifications

Image Sensor	1.0Mega Pixels
Video Resolution	1280 x 720
Video Format	MOV
AV OUT	Yes
Cycle Recording	Yes
Lens Viewing Angle	80°
Frame Rate	30FPS
USB Interface	USB2.0
Power Supply	12V/24V Convert to 5V ; Built-in Li-ion Battery
Operation System	Windows 2000 / XP / Vista / 7
OSD Language	Multi-languages
Dimension	105 x 60x 26mm
Product Weight	63g
Storage	SD Card, 1GB ~ 32GB
Working Temperature	-10 ~ 70°C
Storage Temperature	-30 ~ 85°C

Attentions

- In order to protect users' safety and benefits, please follow the user manual to operate.
- The SD card must be inserted in the indicated direction. Otherwise may cause damage or recording error.
- Please stop using the product if any deformation, having an unknown smell or some other abnormal Phenomena.
- Please use neutral solvent to clean the blot, do not use organic solvent.

Warning

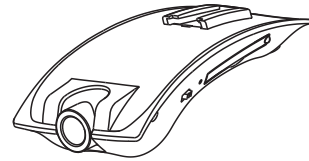
- * Do not modify any accessories, or our company won't responsible for any malfunctions and calamities may cause.
- * Do not put the product into fire, or our company won't responsible for any malfunctions and calamities may cause.
- * Please stop using the product if find distortion in shape, having an offensive odor and some other abnormal phenomena caused by the high temperature in car.
- * Power supply accessories must be operated in the right way as user manual, or our company won't responsible for any malfunctions and calamities may cause.
- * Do not pull out SD card during recording, or the SD card life time and the recorded information will be influenced.

Our company reserves the right to the interpretation of the product and correlative contents.

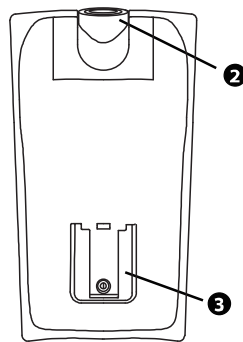
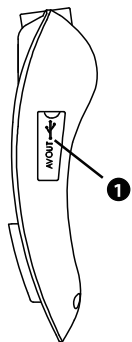


Mobile-i

使用說明書

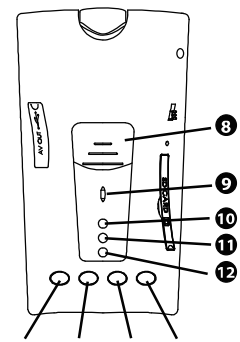
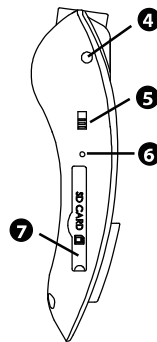


請在使用本產品前詳細閱讀本說明書，並保存留作記錄。



部件 名稱

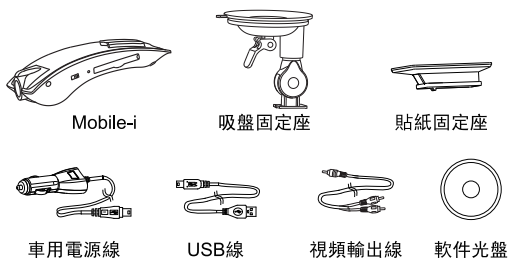
- 1 USB插槽及視訊輸出孔
- 2 錄像鏡頭
- 3 固定座滑槽
- 4 錄像鏡頭鎖
- 5 錄音開關
- 6 復位鍵
- 7 記憶咭插槽軟蓋
- 8 拍攝按鍵



- 9 蜂鳴器
- 10 藍光LED
- 11 綠光LED
- 12 紅光LED
- 13 <下>按鍵
- 14 <上>按鍵
- 15 <確定>按鍵
- 16 <模式>按鍵

零件清單

Mobile-i.....	1PC
吸盤固定座.....	1PC
貼紙固定座.....	1PC
車用電源線.....	1PC
USB 線.....	1PC
視頻輸出線.....	1PC
軟件光盤.....	1PC



28

*請於安裝在車內之前，先進行時間的設定：

於電腦內設定時間

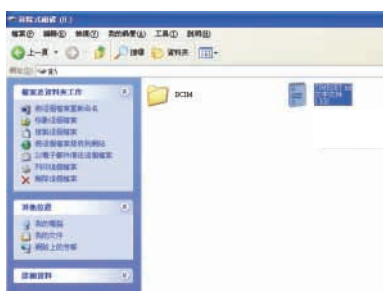
1. 輕按住Mobile-i<拍攝按鈕>1秒開機，此時綠燈亮；
2. 用USB線將電腦與產品USB端口連接，此時Mobile-i藍綠燈亮；
3. 電腦立即顯示“卸除式磁盤”（如下圖），此時可做U盤用以存儲資料；



4. 將電腦系統時間設為當時當地正確時間；

29

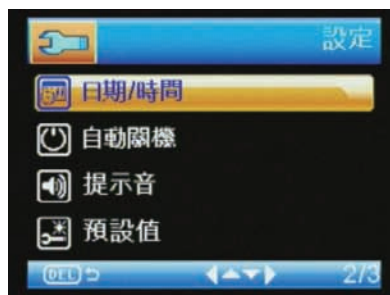
5. 將軟體光盤放入電腦光驅內，把“SETTIME.bat”批處理文件拷貝到電腦任意磁盤，然後雙擊此文件，會產生一個“TIMESET.txt”文檔（此文檔內的時間為電腦系統時間），將此“TIMESET.txt”文檔拷貝到SD卡的根目錄下



6. 當重新開機時，產品內的時間即與電腦系統時間同步，此時拷貝的“TIMESET.txt”文檔也將自動刪除；
7. 為了保持時間準確，建議每半年連接到電腦內檢查時間。

於視屏上設定時間

1. 使用附上的視頻輸出線連接產品至視屏（黃線對應是視頻輸出口，白線對應是音頻輸出口），並將電視機設為視頻模式（AV模式）；
2. 按<拍攝按鈕>1秒開啟Mobile-i，視頻出現實時影像；
3. 按<模式鍵>出現設定菜單，用<上>或<下>鍵選擇<日期/時間>設定項；



30

31

4. 按<確定>鍵來設定日期及時間，最後按<確定>保存及離開；



5. 完成日期及時間設定。

Mobile-i安裝

1. 開啟記憶卡槽的軟蓋，跟據指示的正確方向插入SD卡。（SD卡最大支援32GB）。



注意：如插入SD卡的方向錯誤，將不能錄影，並有機會令產品及SD卡受破壞。

2. 隨產品附上兩款不同的固定座，可根據不同的需要使用，可自行選擇。固定座的安裝方法如下圖，注意安裝方向。



32

33

a. 吸盤固定座
先清潔車前擋風玻璃內側並保持乾爽，把吸盤固定座按壓在擋風玻璃與倒後鏡之間，再把固定座上的摺理拉上，使吸盤牢固的吸附在擋風玻璃之上。

b. 貼紙固定座
先清潔車前擋風玻璃內側並保持乾爽，把紙底撕去後把固定座貼在擋風玻璃與倒後鏡之間，輕微按壓使固定座貼附在擋風玻璃之上。

3. 連接車用電源線到Mobile-i及車內的點火插座。

4. 最後需要調較好攝像鏡頭的角度，根據不同的用戶，有以下兩種方法。

*連接到視屏：

a. 使用隨產品附上的視頻輸出線，將Mobile-i連接到顯示器的視頻輸入端口。

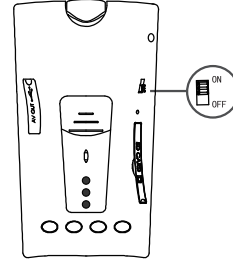
b. 開動車子的電源或直接啟動引擎，Mobile-i將會自動啟動，此時顯示器會自動出現實時影像。

c. 使用自備的十字螺絲起子，把鏡頭鎖內的螺絲逆時針方向轉動，當螺絲鬆動後，用戶可轉動攝像鏡頭的角度，當鏡頭轉動到合適角度以後，再用十字螺絲起子順時針方向轉動，把鏡頭固定。

34

錄製影像

1. 當你的Mobile-i安裝完成，你每次啟動車子，都會自動開啟，此時綠色LED燈會亮起並發出提示音。
2. 等待數秒，紅色LED燈開始閃爍，代表錄影已經開始。
3. 用戶可推動錄音鍵來設定是否開啟錄音功能。
4. Mobile-i需要1~2秒來存取資料，如用戶在此時停止引擎，錄影可能會停止。此時請按<拍攝按鍵>來手動從新開始錄影。
5. 在錄製時請勿將SD卡取出，此動作有機會破舊SD卡或錄製片段。



35

6. 當引擎停止，Mobile-i會在10秒後自動關機。

7. 每段影像大約3分鐘，每段影像中將有約一秒的間隔。

8. 錄影時間會根據SD卡的大小而定，當SD卡空間用盡後，Mobile-i會將最初的15分鐘錄像刪除，並從新開始錄製片段。

9. 如車內電源線鬆脫，Mobile-i會發出提示音，並於10秒後停止錄製。請於安全情況之下從新連接電源線。

10. 尾部的4個按鍵只是連接電腦或視屏時使用，錄製時不需使用。

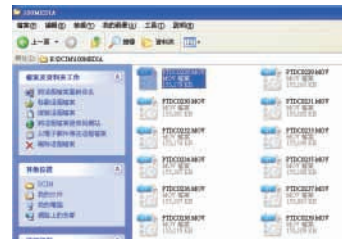
注意：部份車輛型號可能會於停下引擎後繼續拍攝。建議首次安裝後留意LED燈的狀況，如紅色LED燈不停閃爍，則表示拍攝沒有停止。此時請手動把電源線拔除，以保持車輛內電池不會耗盡及不會覆蓋掉之前錄制的片段。

36

連接電腦功能

USB模式

1. 按住產品<拍攝按鍵>開機，此時綠燈亮；
2. 用USB線將電腦與主機USB端口連接，此時Mobile-i藍綠燈亮；
3. 電腦立即顯示1“卸除式磁盤”，（已錄制的資料均在此盤內\DCIM\100MEDIA）



4. 雙擊片段便可觀看影像；
注：要能夠支持MOV格式的播放器軟件

37

連接電視功能

電視模式

1. 打開電視機，並將電視機設為視頻模式（AV模式）；
2. 按<拍攝按鍵>1秒至Mobile-i開機；
3. 用隨附的電視輸出線連接Mobile-i電視接口至電視（黃線對應是視頻輸出口，白線對應是音頻輸出口）；
4. 此時我們就可以看到電視上顯示實時影像；
5. 按<拍攝按鍵>進行錄制，3分鐘為一個視頻，錄製時重按<拍攝按鍵>則停止錄製；

38

6. 連接2次<模式>鍵出現拍攝畫面縮略圖（如下圖）：



- a) 按<上><下> <模式> <確定>鍵對視頻進行上下左右選擇；
- b) 按<拍攝按鍵>選定視圖，此時按<確定>鍵進入刪除畫面（如下圖），再次按<拍攝按鍵>則返回選定視圖；



- c) 按<下>鍵進行播放，再按一次<下>鍵即停止播放影像；
- d) 按<模式>鍵返回實時拍攝畫面。

39

7. 菜單共有三頁, 按<模式>鍵出現設定菜單, 如下圖:



通過<上><下>鍵選擇所需要設置的項目, 按<確定>鍵進入詳細設定, 在設定選項畫面中, 共有以下選項供選擇:

- a) 語言-多國語言的設定, 如意大利文、葡萄牙文、簡體中文、繁體中文、英文、德文、法文、西班牙文等;
- b) 格式化-格式化記憶卡, 所有資料將會刪除;
- c) TV - NTSC及PAL模式的設定;
- d) 光源頻率-50HZ,60HZ設定;
- e) 日期/時間-日期、時間及格式的設定;
- f) 自動關機-設定自動關機的時間; 如: 關, 1分鐘, 3分鐘;
- g) 按鍵聲音-按鍵聲音開、關的設定;
- h) 默認設置-恢復出廠設置的取消及確認;
- i) 1.00版本-V1.0.2010.1022.DEF.

注: 若不需要設定直接按<模式>鍵返回主菜單即可。

40

低電量提示

Mobile-i 的內置電池工作時間約可使用半小時, 當電量降低到一定水平時, 藍色LED燈會閃爍5秒後自動關機, 如產品正在拍攝, 該段影像會馬上停止並儲存在記憶卡內。

LED燈指示

狀態	紅	綠	藍
電源關閉	熄滅	熄滅	熄滅
電源開啟	熄滅	亮光	熄滅
拍攝中	閃爍	亮光	熄滅
記憶卡錯誤	亮光	亮光	熄滅
記憶卡接觸不良	熄滅	閃爍	熄滅
內置電池電量低下	熄滅	熄滅	閃爍
USB 模式	熄滅	亮光	亮光
USB 模式 (沒有記憶卡)	亮光	亮光	亮光

41

技術規格

感應器	一百萬像素
視訊大小	1280 x 720
檔案格式	MOV
視頻輸出	有
重覆錄製	有
鏡頭拍攝角度	80度
幀數	30FPS
USB 介面	USB2.0
電源	12V / 24V轉5V輸出; 內置鋰電池
系統要求	Windows 2000 / XP / Vista / 7
介面語言	多國語言
產品尺寸	105 x 60 x 26mm
產品重量	63g
記憶卡	1GB ~ 32GB
工作環境	-10 ~ 70 °C
儲存環境	-30 ~ 85 °C

42

注意事項

1. 為安全著想, 使用前請仔細閱讀說明書。
2. 記憶卡需根據指示的正確方向安裝, 否則會破壞產品或不能錄製影片。
3. 如產品出現變形, 有異味或其他異常情況, 請馬上停止使用。
4. 如需清潔, 請使用清水輕微濕潤綿布, 輕力擦拭, 不要使用任何化學品進行清潔。
5. 如產品出現死機, 請用細物按壓<復位鍵>, 產品將回復至出廠設定。

警告

- * 請不要進行任何改裝, 否則, 本公司將不會負上任何責任。
- * 請不要把產品投入火災中, 否則, 本公司將不會負上任何責任。
- * 請根據說明書正確連接電源, 否則, 本公司將不會負上任何責任。
- * 工作中請不要拔出記憶卡, 否則會破壞到產品及影片。

本公司有權利更改及解釋產品一切內容及說明。

43