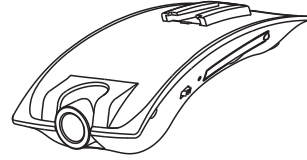


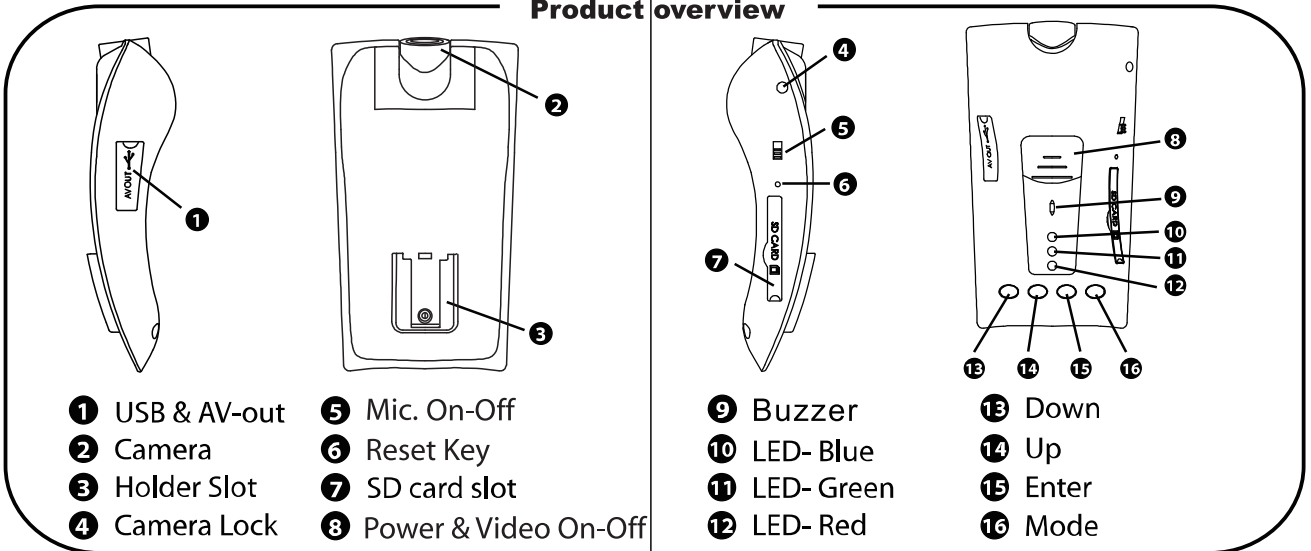


Mobile-i Instruction Manual



Please read this manual before using the Mobil-i, and keep for future reference, thank you.

Product overview

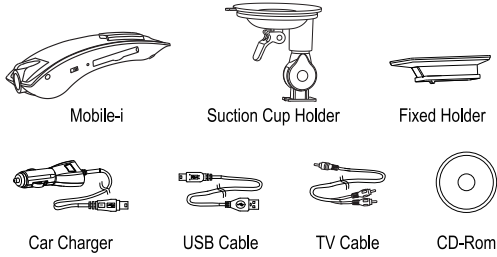


- 1 USB & AV-out
- 2 Camera
- 3 Holder Slot
- 4 Camera Lock
- 5 Mic. On-Off
- 6 Reset Key
- 7 SD card slot
- 8 Power & Video On-Off

- 9 Buzzer
- 10 LED- Blue
- 11 LED- Green
- 12 LED- Red
- 13 Down
- 14 Up
- 15 Enter
- 16 Mode

Contents

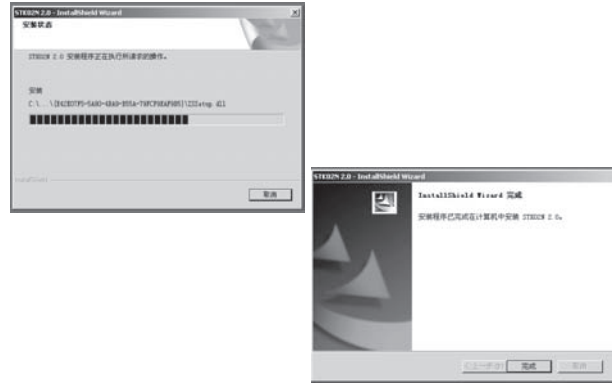
Mobile-i.....	1PC
Suction Cup Holder.....	1PC
Fixed Holder.....	1PC
Car Charger.....	1PC
USB Cable.....	1PC
TV Cable.....	1PC
CD-Rom.....	1PC



6

Driver Installation and Backup CD Content

1. Turn on PC and insert CD-rom into CD-ROM driver. There are 'STK02N' folder & 'RTCRW.exe' time setting applications. Please copy both to PC for later use.
2. Double click to execute 'STK02N 2.0.exe', Click "Finish" after automatic installation.

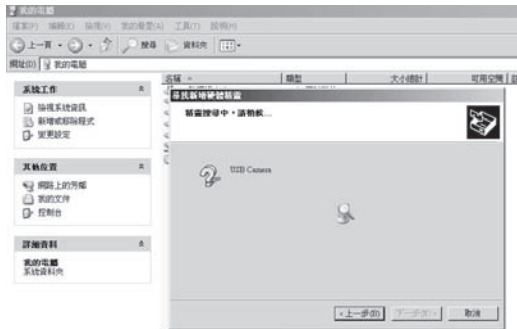


7

Please setup the Date & Time into Mobile-I before install to your vehicle:

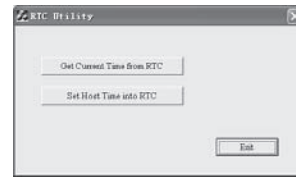
Date & Time setting (PC)

1. Press & hold the 'Enter' key, then connect Mobile-i to PC by USB cable. PC will start to search the driver for Mobile-i. PC will prompt the equipment can be used after ready.



8

2. Execute 'RTC RW.exe', then double click 'Set Host Time Into RTC' to update the PC system time into RTC. After that, double click 'Get Current Time From RTC' to confirm the current time in RTC.



3. Time setting complete.
4. We recommend user updates the time every 6 month.

9

Date & Time setting (TV)

1. Connect Mobile-i to TV or AV monitor using applied TV cable.
2. Press 'Power & Video on-off' key for 3 seconds. Real time image will display on TV or AV monitor.
3. Press 'Mode' key twice, monitor will show up the Menu Interface.
4. Press 'Power & Video on-off' key to enter Setup Menu.



5. Use 'Up / Down' key to enter Data Input option.
6. Press 'Enter' and select 'Set' as below.
7. Use 'Up / Down' key and 'Power & Video on-off' key to adjust the date and time format. Press 'Enter' key to quit.
8. Time setting complete.

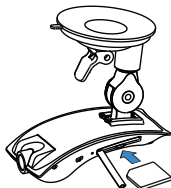


10

11

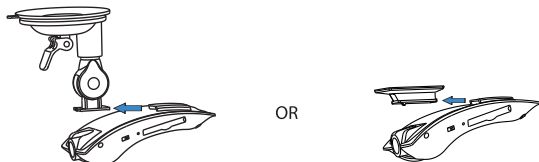
Mobile-i installation

1. Open the SD card cover and insert a SD card into the slot. (support SD card up to 32GB).



PS.: The SD card must be inserted in the indicated direction. Otherwise may cause damage or recording error.

2. You can select Suction Cup Holder or Fixed Holder according to your own chooses. Then fix the Camera on the Holder as below.



12

a. Suction Cup Holder

Please clean up the windshield (inside). Put the holder in front of rear mirror then press the lever down to ensure the holder was fixed well.

b. Fixed Holder

Please clean up the windshield, Peel backing paper off and then stick it onto windshield by adhesive. Push firmly to secure holder.

3. Connect car charger to Mobile-I USB slot for power supply.

4. Lens adjust

You have two way to adjust the lens angle:

Connect Mobile-i to your own video device:

a. Using applied TV cable to Connect Mobile-i to your own video device.

b. Start the engine then Mobile-i will start recording immediately, real time image will display on the screen.

c. Use Philips screw driver to loosen the Camera Lock, adjust the lens angle according to screen then lock it.

13

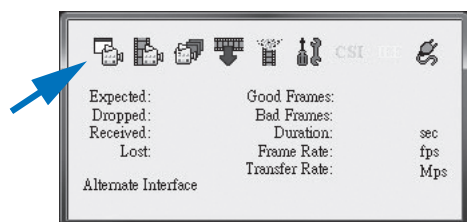
Connect Mobile-i to your laptop:

a. Press & hold "Enter", connect Mobile-I to laptop using the supplied USB cable.

b. "Image Download Utility" start automatically. You can close the window at once or wait 15sec, utility will close automatically.

c. Execute "STK02NC.EXE"

d. Utility windows appear, then click the first icon (from left to right) to turn on PC-cam mode.



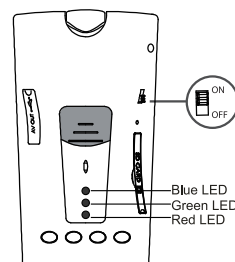
e. PC-Cam started. Use Philips screw driver to loosen the Camera Lock, adjust the lens angle according to screen then lock it.

***If you have not any video device, please test recording and play back on TV.**

14

Recording

1. Start engine to power on Mobile-i, Green LED on and beep sound alert.
2. Red LED flash when Mobile-i start recording automatically.
3. Set the 'Mic on/off switch' to 'off' if no need sound recording.
4. Mobile-i will startup after starting engine if the lithium battery is live but won't record automatically if stop engine at once. It will record if detect the power supply from car charger after restarting engine.
5. Mobile-i need 1~2 sec. for data loading, If you stop the engine before the recording start, recording function may not start or stop automatically. Please check the LED light status and press Power & Video on-off switch to resume/stop recording manually.
6. Do not pull out SD card during recording; it may damage SD card or recording data.



15

8. Every movie clip is three minutes and saved as AVI format. Date & time is shown on the video accordingly.

9. After SD card memory is full, Mobile-i will erase the first 15mins data to free up the memory for continue recording.

10. You will get a Beep sound alert if the car charger loosened by vibration during driving. Mobile-i will stop recording after 10 sec.

11. "Mode, Enter, Up & Down" button for TV mode or PC connection only.

12. Stop engine, Mobile-i keep on recording for 10 seconds and then shutdown.

PS. Certain car models may keep the Mobile-i power on even you stop the engine. If the red LED keep on, its means car charger keeps working, please pull out the charger to avoid previous video have been overwrite.

16

PC Mode Operations

USB mode

1. Press & hold the 'Mode' key, then connect Mobile-i to PC by USB cable. "Image Download Utility" will start automatically.



2. If "Image Download Utility" didn't start, browse you SD card by "My computer" or "Files Manager".

3. Double-click "removable disk", you will find all the video were saved in 'DCIM' folder.

4. Play back the AVI file by any media player software.

Camera Mode

Press & hold the 'Enter' key, then connect Mobile-i to PC by USB cable. you can execute STK02N 2.0.EXE anytime for running Mobile-I as a PC camera.

17

TV Mode Operations

1. Connect Mobile-i to TV or AV monitor using supplied TV cable.
2. The 'Mode' key can switch to three menu. Press it to stop recording to enter into playback mode first, and then press once to enter into menu mode and press once again to enter into the record standby mode.
3. There are 9 thumbnails in the playback mode. Use 'up / down' key to select video. Press 'Enter' key to confirm the selection. Press 'Up' key once to play and press once again to pause.
4. Under TV mode, use the 'Mode / Enter / Up / Down' four keys to play video or reset other functions as below:
 - a) Select 'Delete' to delete one, all or selected videos.
 - b) Select 'Slide Show' to set the replay time.
 - c) Select 'Thumbnail' to browse video.
 - d) Select 'Volume' to set the video volume.
 - e) Select 'Format' to format memory.
 - f) Select 'Beep' to turn on or turn off the buzzer.
 - g) Select 'Language' to choose language.
 - h) Select 'Auto Off' to set the auto power off time.
 - i) Select 'Sys, Reset' to recover the default system.
 - j) Select 'Light Freq' to set the light frequency.
 - k) Select 'TV output' to set the output format for video.
 - l) Select 'Date Input' to set the date and time.
 - m) Select 'USB' to use Mobile-i as a removable disk or a camera.

18

Low Power Indication

If Mobile-i work with its own battery and the power running low, the blue LED will flash for 5 seconds and then shut down. If it is recording, all the data will be saved and then shut down.

LED Status

Working status	Red	Green	Blue
Power off	Off	Off	Off
Power on	Off	On	Off
Recording	Flash	On	Off
SD card detect fault	On	On	Off
SD card bad contact	Off	Flash	Off
Li-ion battery low	Off	Off	Flash
USB mode	Off	On	On
USB mode (no SD card)	On	On	On
Battery charging full	Off	Off	Off

19

Specifications

Image Sensor	300K Pixel CMOS Sensor
Video Resolution	VIDEO:640x480(VGA)
File Format	AVI
AV OUT	YES
Cycle Recording	YES
Lens View Angle	80 Degree
Frame	30FPS
PC Interface	USB 1.1
Power	5V Power ; Built-in Li-Ion Battery
Operation system	Windows 98 / 2000 / XP / Vista / 7
Menu OSD	Multi-languages
Stand	2 different adjustable holders
Dimension	105 x 60 x 26mm
Weight	68g
Support SD Card	1GB to 32GB
Working temperature	-10 C~70 C
Storing temperature	-30 C~85 C

20

Attentions

1. In order to protect users' safety and benefits, please follow the user manual to operate.
2. The SD card must be inserted in the indicated direction. Otherwise may cause damage or recording error.
3. Please stop using the product if any deformation, having an unknown smell or some other abnormal Phenomena.
4. Please use neutral solvent to clean the blot, do not use organic solvent.

Warning

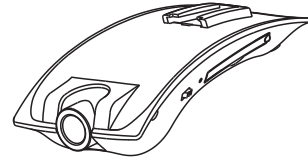
- * Do not modify any accessories, or our company won't responsible for any malfunctions and calamities may cause.
- * Do not put the product into fire, or our company won't responsible for any malfunctions and calamities may cause.
- * Please stop using the product if find distortion in shape, having an offensive odor and some other abnormal phenomena caused by the high temperature in car.
- * Power supply accessories must be operated in the right way as user manual, or our company won't responsible for any malfunctions and calamities may cause.
- * Do not pull out SD card during recording, or the SD card life time and the recorded information will be influenced.

Our company reserves the right to the interpretation of the product and correlative contents.

21

Mobile-i

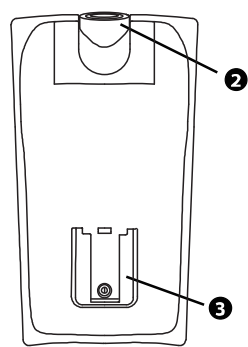
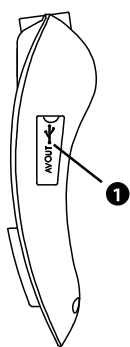
使用說明書



請在使用本產品前詳細閱讀本說明書，並保留作記錄。

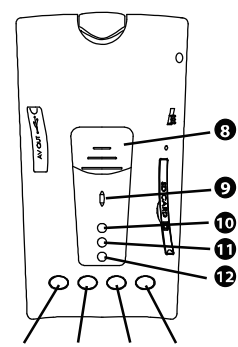
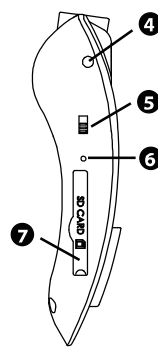
24

25



部件

名稱



- 1 USB插槽及視訊輸出孔
- 2 錄像鏡頭
- 3 固定座滑槽
- 4 錄像鏡頭鎖
- 5 錄音開關
- 6 復位鍵
- 7 記憶卡插槽軟蓋
- 8 拍攝按鍵

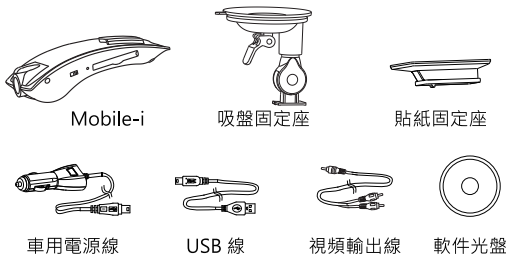
- 9 蜂鳴器
- 10 藍光LED
- 11 綠光LED
- 12 紅光LED
- 13 <下>按鍵
- 14 <上>按鍵
- 15 <確定>按鍵
- 16 <模式>按鍵

26

27

零件清單

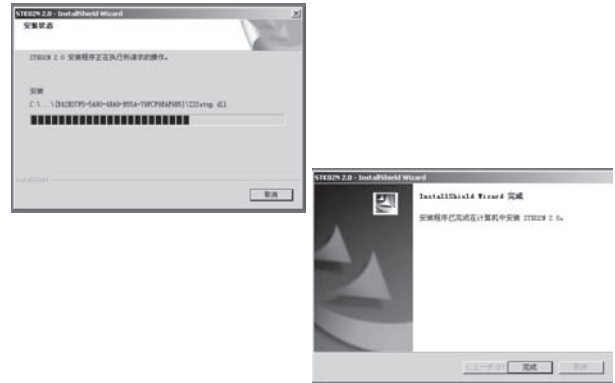
Mobile-i.....	1PC
吸盤固定座.....	1PC
貼紙固定座.....	1PC
車用電源線.....	1PC
USB 線.....	1PC
視頻輸出線.....	1PC
軟件光盤.....	1PC



28

軟件安裝

- 將軟件光盤放入磁碟機內, 把 STK02N 資料夾及 RTCRW.exe 時間設定軟件覆制到電腦內備用.
- 雙按運行 STK02N 2.0.exe, 把驅動程式安裝到電腦內. 當安裝完畢, 按 <完成> 結束程序.

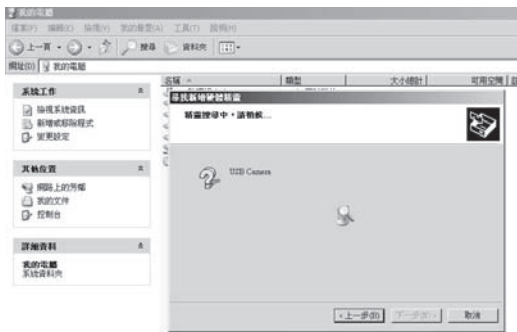


29

*請於安裝在車內之前, 先進行時間的設定:

於電腦內設定時間

- 按著 <確定> 按鍵的情況之下, 連接USB線到個人電腦的USB接口, 電腦會自動尋找已安裝的驅動程式, 完成後會自動關閉有關視窗.



- 運行光碟內或已存到電腦內的RTCRW.exe程序, 跳出如下對話框, 然後點擊 <Set Host Time Into RTC>, 程式會自動把電腦內的時間與Mobile-i同步. 完成設定後, 可以點擊 <Get Current Time From RTC> 來核對時間是否正確.



- 設定完成, 可以拔除USB線連接.
- 為了保持時間準確, 建議每半年連接到電腦內檢查時間.

30

31

於視屏上設定時間

- 使用附上的視頻輸出線連接到視屏.
- 按著 <拍攝按鍵> 3秒 開啟Mobile-i, 視頻出現實時影像.
- 按 <模式> 鍵, 出現設定菜單.
- 可用 <上> <下> 鍵選擇左方菜單的選項, 再按 <拍攝> 鍵進入詳細右方設定畫面, 如下:



- 用 <上> 或 <下> 鍵選擇日期設定畫面.
- 選擇 <設定>, 並按 <確認> 鍵進入.
- 通過 <上>, <下> 鍵選定, 並按 <確定> 鍵來設定日期及時間, 最後按 <確定> 保存及離開.
- 完成日期及時間設定.

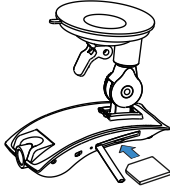


32

33

Mobile-i 安裝

1. 開啟記憶卡插槽的軟蓋, 跟據指示的正確方向插入記憶卡。
(記憶卡咭最大支援32GB)。



注意: 如插入記憶卡的方向錯誤, 將不能錄影, 並有機會令產品及記憶卡受破壞。

2. 隨產品附上兩款不同的固定座, 可根據不同的需要進行選擇。
固定座的安裝方法如下圖, 注意安裝方向。



34

- a. 吸盤固定座
先清潔車前擋風玻璃內側並保持乾爽, 把吸盤固定座按壓在擋風玻璃與倒後鏡之間, 再把固定座上的橫桿拉上, 使吸盤牢固的吸附在擋風玻璃之上。
 - b. 貼紙固定座
先清潔車前擋風玻璃內側並保持乾爽, 把底紙撕去後把固定座貼在擋風玻璃與倒後鏡之間, 輕微按壓使固定座貼附在擋風玻璃之上。
3. 連接車用電源線到 Mobile-i 及車內的點火插座。
 4. 最後需要調較好攝像鏡頭的角度, 根據不同的用戶, 有以下兩種方法,

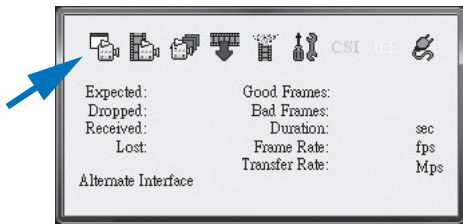
*連接到視屏:

- a. 使用隨產品附上的視頻輸出線, 將 Mobile-i 連接到顯示器的視頻輸入端口。
- b. 開動車子的電源或直接啟動引擎, Mobile-i 將會自動啟動, 此時顯示器會自動出現實時影像。
- c. 使用自備的十字螺絲起子, 把鏡頭鎖內的螺絲逆時針方向轉動, 當螺絲鬆動後, 用戶可轉動攝像鏡頭的角度, 當鏡頭轉動到合適角度以後, 再用十字螺絲起子順時針方向轉動, 把鏡頭固定。

35

*連接到手提電腦本:

- a. 按著 <確定> 按鍵的情況之下, 連接 <USB線> 到手提電腦的USB接口。
- b. <Image Download Utility> 將會自動開啟. 此時可直接關閉軟體, 或等待15秒後自動關閉。
- c. 執行 <STK02NC.EXE>
- d. 工具軟體出現, 此時點擊左上角的圖標開啟視像功能. 視像功能開始, 此時電腦可看到實時影像。



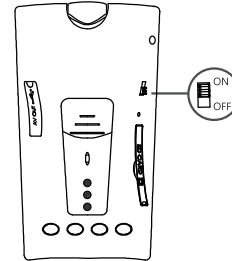
- e. 使用自備的十字螺絲起子, 把鏡頭鎖內的螺絲逆時針方向轉動, 當螺絲鬆動後, 用戶可轉動攝像鏡頭的角度, 當鏡頭轉動到合適角度以後, 再用十字螺絲起子順時針方向轉動, 把鏡頭固定。

*如用戶沒有以上兩種設備, 請直接錄製影像後, 再把記憶卡取出到電視或電腦內查看。

36

錄製影像

1. 當 Mobile-i 安裝完成, 每次啟動車子時 Mobile-i 都會自動開啟, 此時綠色LED燈會亮起並發出提示音。
2. 等待數秒, 紅色LED燈開始閃爍, 代表錄影已經開始。
3. 用戶可推動錄音鍵來設定是否開啟錄音功能。
4. Mobile-i 需要 1~2 秒來存取資料, 如用戶在此時停止引擎, 錄製可能會停止. 此時請按 <拍攝按鍵> 來手動從新開始錄製。
5. 在錄製時請勿將記憶卡取出, 此動作有機會破壞記憶卡或錄製片段。
6. 當引擎停止, Mobile-i 會在10秒後自動關機。
7. 每段影像大約3分鐘, 每段影像中將有約一秒的間隔。
8. 錄製時間會根據記憶卡的大小而定, 當記憶卡空間用盡後, Mobile-i 會將最初的15分鐘錄像刪除, 並從新開始錄製片段。



37

9. 如車內電源線鬆脫, Mobile-i 會發出提示音, 並於10秒後停止錄製. 請於安全情況之下從新連接電源線。
10. 尾部的4個按鍵只是連接電腦或視頻時使用, 一般錄製時不需使用。

注意: 部份車輛型號可能會於停下引擎後繼續拍攝, 建議首次安裝後留意LED燈的狀況, 如紅色LED燈不停閃爍, 則表示拍攝沒有停止. 此時請手動把電源線拔除, 以保持車輛內電池不會耗盡。

38

連接電腦功能

USB模式

1. 按著 <模式> 按鍵的情況之下, 連接 <USB線> 到電腦的USB接口。
<Image Download Utility> 視窗會自動開啟。



2. 如 <Image Download Utility> 沒有自動開啟, 請在 <我的電腦> 或 <檔案總管> 內手動尋找記憶卡。
3. 雙按 <Removable disk>, 已錄製的影像都儲存在 <DCIM> 資料夾之內。
4. 雙按片段便可觀看AVI影像。

視訊裝置模式

按著 <確定> 按鍵的情況之下, 連接 <USB線> 到電腦的USB接口, 並運行 STK02N 2.0.EXE, Mobile-i 可當作視訊裝置使用。

39

電視模式

1. 使用隨產品附送的視頻輸出線連接到電視或顯示屏。
2. 菜單共有三頁, 可按<模式>鍵選擇。
3. 在觀看影像菜單中, 按<上>或<下>鍵選擇要觀看的影像, 按<上>鍵開始播放, 再按可暫停影像。
4. 在設定畫面中, 共有以下的選項供選擇:
 - a) 刪除 - 刪除單一或所有的影像。
 - b) 幻燈片 - 設定幻燈片間隔時間。
 - c) 預覽 - 設定預覽圖像, 方便尋找片段。
 - d) 音量 - 設定音量。
 - e) 格式化 - 格式化記憶卡, 所有資料將會刪除。
 - f) 提示音 - 設定提示音開關。
 - g) 語言 - 多國語言設定。
 - h) 自動關機 - 設定自動關機時間。
 - i) 系統重置 - 所有設定回復出廠設定。
 - j) 頻率 - 設定影像頻率格式。
 - k) 輸出格式 - 設定PAL或NTSC格式。
 - l) 日期設定 - 設定日期時間及格式。
 - m) USB - 設定為流動硬盤使用。

40

低電量提示

Mobile-i 的內置電池約可使用半小時, 當電量降低到一定水平時, 藍色LED燈會閃爍 5 秒後自動關機。如產品正在拍攝, 該段影像會馬上停止並儲存在記憶卡內。

LED 燈指示

狀態	紅	綠	藍
電源關閉	熄滅	熄滅	熄滅
電源開啟	熄滅	亮光	熄滅
拍攝中	閃爍	亮光	熄滅
記憶卡錯誤	亮光	亮光	熄滅
記憶卡接觸不良	熄滅	閃爍	熄滅
內置電池電量低下	熄滅	關	閃爍
USB 模式	熄滅	亮光	亮光
USB 模式 (沒有記憶卡)	亮光	亮光	亮光
充電完畢	熄滅	熄滅	熄滅

41

技術規格

鏡頭	三十萬像數
視訊大小	640 x 480 (VGA)
檔案格式	AVI
視頻輸出	有
重覆錄製	有
鏡頭拍攝角度	80度
幀數	30FPS
USB 介面	USB1.1
電源	5V 輸入; 內置鋰電池
系統要求	Windows 98/ 2000/ XP/ Vista
介面語言	多國語言
產品尺寸	105 x 60 x 26mm
產品重量	70g
記憶卡	1GB ~ 32GB
工作環境	-10 ~ 70°C
儲存環境	-30 ~ 85°C

42

注意事項

1. 為安全考慮, 使用前請仔細閱讀說明書。
2. 記憶卡需根據指示的正確方向安裝, 否則會破壞產品或不能錄製影片。
3. 如產品出現變形, 有異味或其他異常情況, 請馬上停止使用。
4. 如需清潔, 請使用清水輕微濕潤綿布, 輕力擦拭。不要使用任何化學品進行清潔。
5. 如產品出現死機, 請用細物按壓<復位鍵>, 產品將回復至出廠設定。

警告

- * 請不要進行任何改裝, 否則, 發生任何意外情況將與本公司無關。
- * 請不要把產品投入火中, 否則, 發生任何意外情況將與本公司無關。
- * 請根據說明書正確連接電源, 否則, 發生任何意外情況將與本公司無關。
- * 工作中請不要拔出記憶卡, 否則會破壞到產品及影片。

本公司有權利更改及解釋產品一切內容及說明。

43